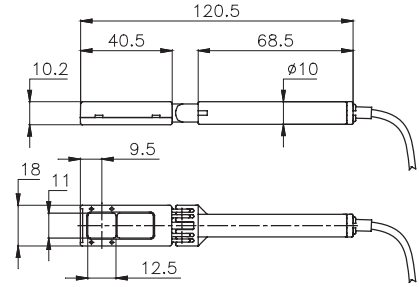


# PD200 Head and Display

## CW power 20nW - 200mW

- 400 to 1100nm spectral range
- 6 decades of range
- Swivel mount head for handheld or stand use
- Compact, portable display unit with backlight for use in low light environment
- Rechargeable (more than 18 hours of operation between chargings)
- Calibration is in head connector for interchangeability
- Analog output



The PD200 laser power meter offers a cost-effective solution for measuring one or two laser wavelengths at powers up to 200mW. Users can set the PD200 to give a calibrated reading at any two wavelengths in the range 400 - 1100nm. (After setting once, the wavelengths cannot be changed). The wavelength sensitivity curve also allows users to extrapolate to other nearby wavelengths. The wavelength calibration is contained in the head connector, allowing interchangeability between different heads and displays. The PD200 has advanced circuitry with excellent sensitivity, signal to noise ratio, accuracy and response time. It also has special circuitry to reject electromagnetic interference.

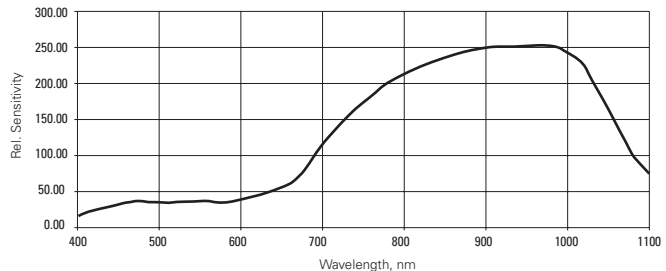
The PD200 can be operated either by battery or from an AC source with the charger plugged in at all times. Its backlight allows illumination of the display in low light condition and is operated by a switch on the rear panel.

## Specifications

Spectral range:	400 - 1100nm
Calibration wavelengths:	One time choice of any two wavelengths in the range 400 - 1100nm
Power ranges:	6 ranges from 200.0mW to 2.000µW
Power noise level:	<1nW
Accuracy at calibrated wavelengths:	±5% 400 - 950nm, ±7% 950 - 1100nm
Linearity:	±1%
Response time:	0.2s
Damage threshold:	50W/cm <sup>2</sup>
Maximum pulse energy:	50µJ
Aperture:	10x10mm
Head (swivel mount head for handheld or stand use):	(LxWxD) 122 x 17 x 9mm
Display unit:	(LxWxD) 203 x 95 x 38mm
Electromagnetic compatibility:	CE approved
Cable length:	1.5 meters
Backlight:	EL type. Operates only with charge plugged in.
Battery:	2 x RR 1.8A-h NiMH
Charger:	DC: 11 to 22V, 3W. Operation between charges 18hrs. Battery charge time 10 - 14 hr.
Analog output:	1Volt full scale

This curve shows the approximate spectral sensitivity of the PD200 with wavelength and can be used to calculate the approximate power reading of lasers that are different from the calibrated wavelengths

PD200 Spectral Response



## Ordering information

Item	Description	Ophir P/N
PD200-V2	PD200 smart head	1Z02425
PD200 display	PD200 display unit	1Z01804
Stand	Swivel stand for PD200	1Z09004